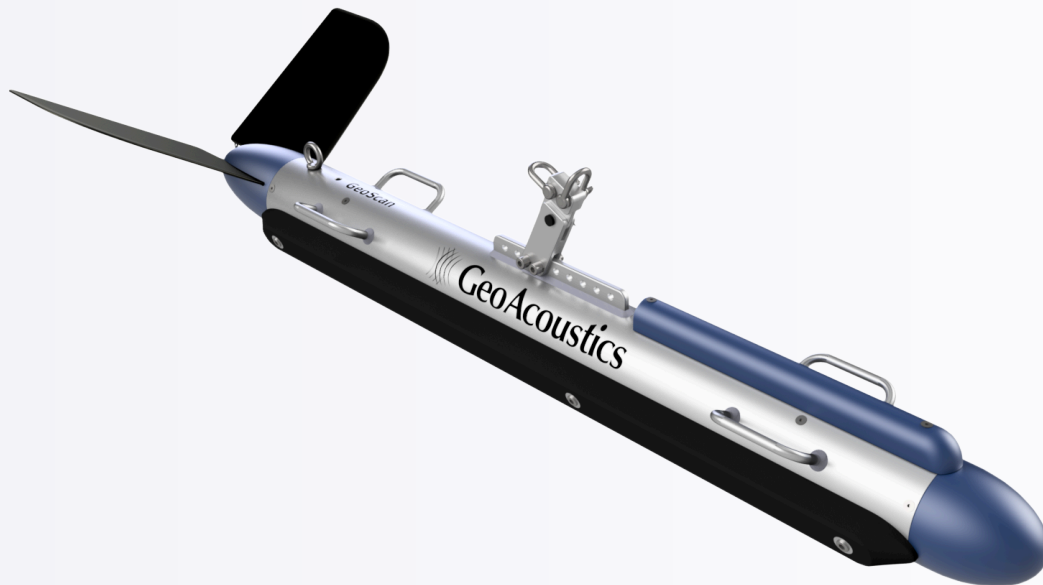


GeoScan 2361

Simultaneous Dual Frequency Side Scan Sonar



OVERVIEW

The GeoScan 2361 is a simultaneous dual-band, high-definition Side Scan Sonar designed for a diverse range of survey applications. Operating at 300 kHz and 600 kHz with a 60 kHz bandwidth, the GeoScan 2361 is the ideal solution for end-users demanding the highest range performance.

The GeoScan 2361 uses ultra-short pulses and pulse compression technology for improved range resolution across track and image resolution. A dynamic variable aperture focusing system improves resolution at shorter ranges and quality at longer ranges, and an automated image equalisation system enhances contrast and definition.

The GeoScan 2361 contains an embedded pitch, roll & heading sensor, and a pressure sensor for depth measurement. Ideal for underwater infrastructure inspections, pipeline surveys, emergency response, archaeology, marine pasture assessments, and environmental monitoring, it delivers precise, high-resolution data at range.

KEY FEATURES

- Dual frequency operation: 300 kHz & 600 kHz deliver increased range
- 60 kHz update time
- CW and Chirp pulses
- No near-field blurring
- Superior terrain visualisation

APPLICATIONS

- Search & Recovery (SAR)
- Hydrographic surveys
- Object detection/identification
- Inspection & Engineering
- Marine Geology & Archaeology

GeoScan 2361

Technical Specifications

Performance

Working Frequency	300 kHz / 600 kHz
Signal Bandwidth	60 kHz
Max Slant Range	230m @300 kHz / 120m @600 kHz
Horizontal Beam Width	0.28° @300 kHz / 0.26° @600 kHz
Vertical Beam Width	50°
Across Track Resolution	2.5cm @300kHz/ 1.25cm @600kHz
Along Track Resolution	300 kHz: 0.24 m @50 m; 0.49 m @100 m; 0.73 m @150m 600 kHz: 0.09 m @20 m; 0.23 m @50 m; 0.34 m @ 75m
Signal Type	CW/Chirp
Working Depth	300 m
Auxiliary Sensors	Pressure, roll, pitch & heading

Physical

Towfish Size	100 x 1200 mm
Towfish Weight	25 kg (In Air) / 12 kg (In water)
Sonar Interface Module Size	208 x 127 x 66 mm
Sonar Interface Module Weight	1.6 kg
Power Supply	DC 20-36V
Power Consumption	60 W
Cable Length	Standard 50 m (200 m Optional)
Data Interface	Ethernet Cable
Working Temperature	-2°C ~ 40°C
Storage Temperature	20°C ~ 55°C

Software

Display & Control Software	Supplied with GeoScan software for control and storage of sonar data
Third Party Compatibility	Export XTF format data to 3rd party applications

Specifications subject to change without notice. E&OE